



The IT002A430WSW power supply has been optimised for use in the value Mid Range Workstation segment, and features two separate SELV compliant 12V outputs. It is compatible for use in systems with motherboards designed for single or dual Intel Xeon™ (860) processors, and will support large PCI and Memory integrations. It features five main outputs and a 5 volt auxiliary output, and meets the requirements of the EN61000-3-2 regulation for limited harmonics (PFC). The power supply is one of NMB's "Stretch PS2" series. It has a standard PS2 faceplate and common PS2 mounting features.

Standard Features

- High Reliability
• Power Factor Correction
• Built in EMI filter (VDE Level B)
• E Star Compliant
• No Cross regulation or Combined Load Limit
• Short Circuit, Over Voltage and Over Current Protection on all outputs
• Advance power fail warning
• Auto re-start after AC power fail
• TTL compatible Power Good signals
• Low noise, 80mm Ball bearing fan
• +5V Standby output

Environmental

- Operating Temperature: 10° C to 50° C
• Storage Temperature: -40° C to 70° C
• Relative Humidity: 8% to 95% @ 10° C to 50° C Non Condensing

Reliability:

MTBF > 200K Hours

Electrical Specifications

- Input
• Voltage Range: 90 – 264VAC
• PFC: Complies with EN61000-3-2 (PF > 0.95)
• Frequency: 47 – 63 Hz
• EMI/RFI: Certified FCC 20780 Part 15 Subpart J, Class B and VDE 0871 Level B CISPR 22 Class B CE Compliant
• Efficiency: 70% @ Full Load (Nominal Line)
• Leakage Current <0.75mA @ 240VAC to GND
• Remote on/off: TTL compatible

Safety

Certified to:

UL: UL1950
CSA: CSA22.2 No. 234 M90
TUV: EN60950/DIN VDE0805
CB- IEC950 Including Nrdic Deviations

Table with 7 columns: Rating Output, Voltage, Regulation, Minimum Load, Maximum Load, Peak, Ripple P-P (Max). Rows include Maximum Continuous Power (430W @ 50° C), Maximum Surge Power (520W @ 50° C), and detailed output specifications for 6 different output rails.

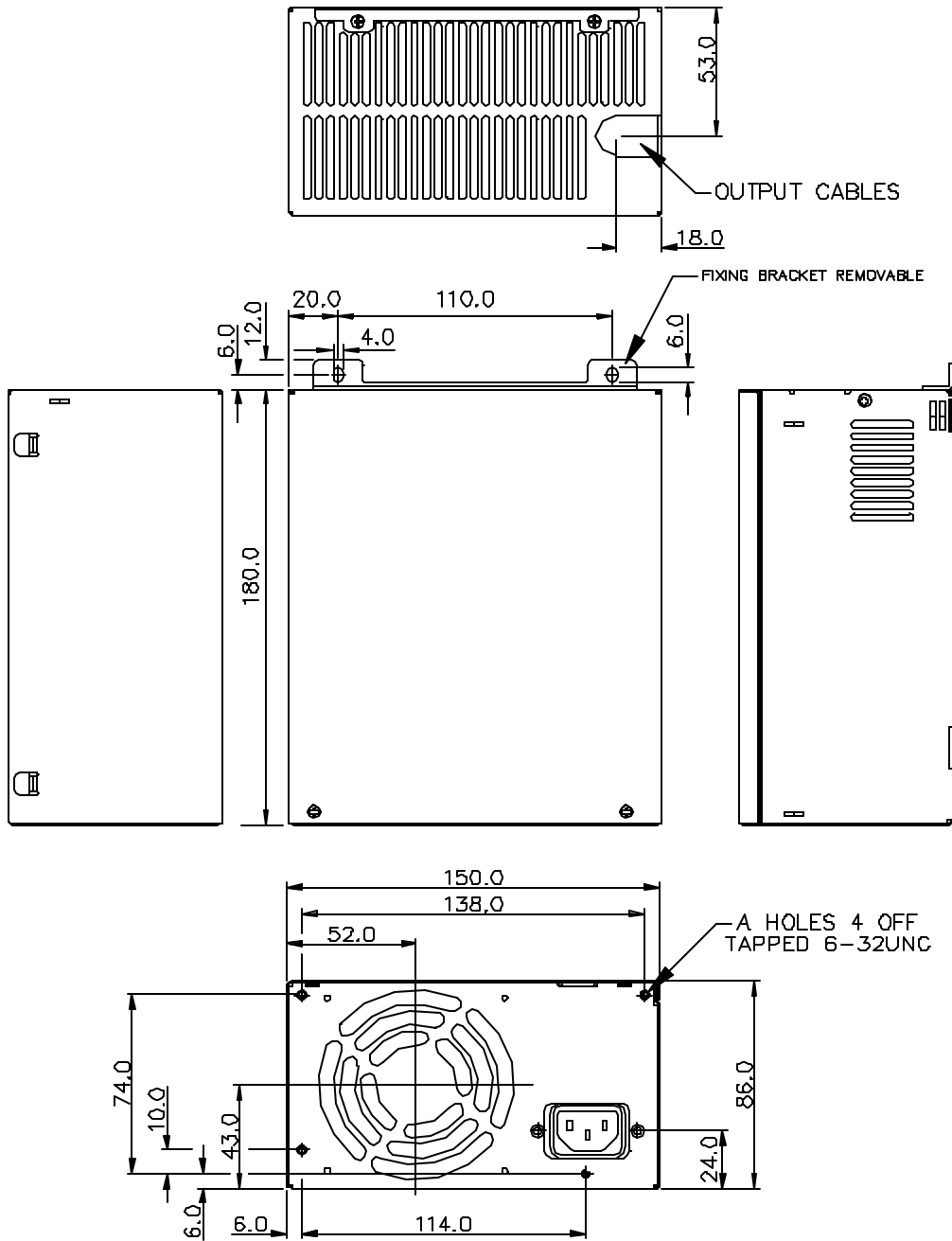
Table with 4 columns: Mechanical Size, Width, Height, Length. Row: PS2- 180 Form Factor, 150 mm, 86 mm, 180 mm

The information contained in this data sheet represents typical performance of the product, and is subject to change without notice. Product performance may be varied or enhanced to meet individual requirements. For further information please contact your local sales office



NMB Technologies Inc, Minebea Electronics (UK) Ltd, NMB Minebea GmbH, NMB Minebea Sarl, NMB Italy Srl, Minebea Technologies Pte. Ltd. Contact information for various global offices including USA, UK, Germany, France, Italy, and Singapore.

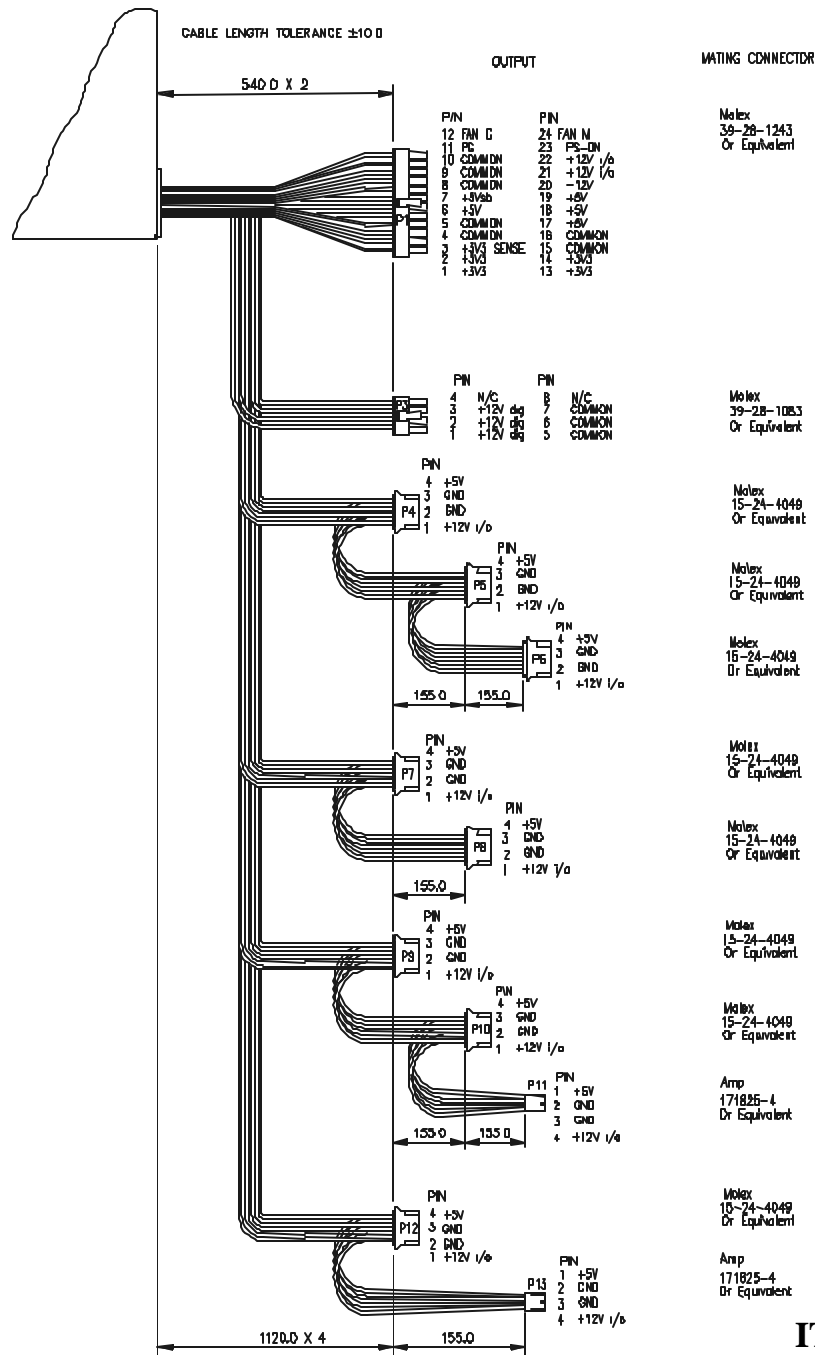
Stretch PS2 Series 430W PS2-180 Form Factor [IT002A430WSW]



The information contained in this data sheet represents typical performance of the product, and is subject to change without notice. Product performance may be varied or enhanced to meet individual requirements. For further information please contact your local sales office



NMB Technologies Inc. 9730 Independence Avenue, Chatsworth, California USA Tel: (818) 341 3355 Fax: (818) 341 8207
Minebea Electronics (UK) Ltd. 32 Fountain Drive, Inchinnan Business Park, Renfrewshire PA4 9RF, Scotland, Tel: (44) 141 814 7700 Fax: (44) 141 2171 1108
NMB Minebea GmbH, Siemensstrasse 30, 63225 Langen Germany, Tel: (49) 6103-913-0 Fax: (49) 6103-913-220
NMB Minebea Sarl, 5 Av. Des Bosquets, 9550 Baillet en France, France Tel: (33)1-34083939 Fax: (33)1-34083930
NMB Italy Srl, Via A. Grandi 39/41, 20017 Mazzo di Rho, Milan Italy, Tel: (39) 2-939711 Fax: (39) 2-93901154
Minebea Technologies Pte. Ltd. PSA Building, 460 Alexandra Road, #34-02, Singapore 119963, Tel: (65) 278 8522, Fax: (65) 444 6527



IT002A CABLES

The information contained in this data sheet represents typical performance of the product, and is subject to change without notice. Product performance may be varied or enhanced to meet individual requirements. For further information please contact your local sales office



NMB Technologies Inc, 9730 Independence Avenue, Chatsworth, California USA Tel: (818) 341 3355 Fax: (818) 341 8207
Minebea Electronics (UK) Ltd., 32 Fountain Drive, Inchinnan Business Park, Renfrewshire PA4 9RF, Scotland, Tel (44) 141 814 7700 Fax (44) 141271 1108
NMB Minebea GmbH, Siemensstrasse 30, 63225 Langen Germany, Tel (49) 6103-913-0 Fax (49) 6103-913-220
NMB Minebea Sarl, 5 Av. Des Bosquets, 9550 Baillet en France, France Tel (33)1-34083939 Fax (33)1-34083930
NMB Italy Srl, Via A. Grandi 39/41, 20017 Mazzo di Rho, Milan Italy, Tel (39) 2-939711 Fax (39) 2-93901154
Minebea Technologies Pte. Ltd, PSA Building, 460 Alexandra Road, #34-02, Singapore 119963, Tel (65) 278 8522, Fax (65) 444 6527